

User Manual

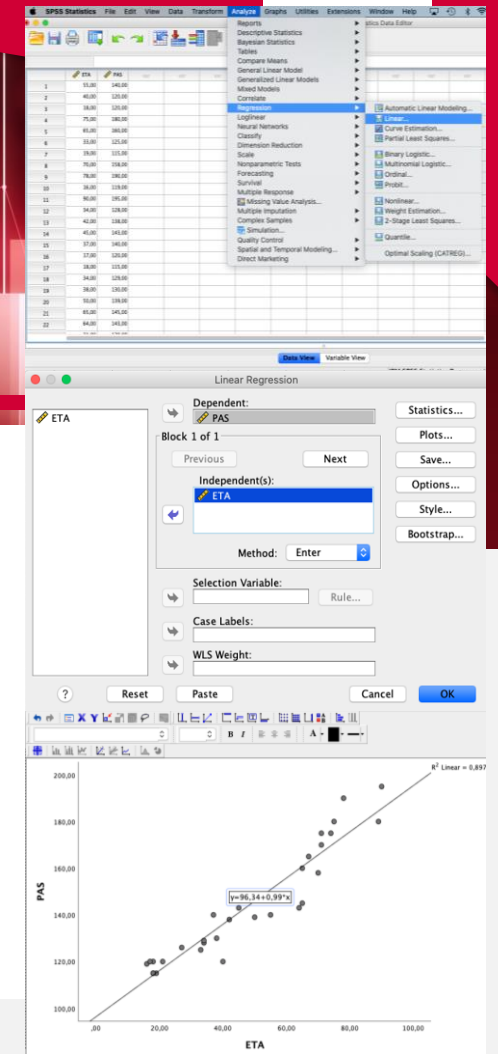
STATISTICS FOR DATA ANALYSIS



powered by

MANUAL INDEX

- **Installation** - How to install Statistics for Data Analysis (New Installation)
- **Installation** - How to install Statistics for Data Analysis (Upgrade)
- **Launch Statistics for Data Analysis** - How to launch SPSS Statistics
- **Dashboard** – Webinar and News
- **Add-Ons** - List of available Add-Ons
- **Additional tools** - Amos, Additional packages, License activation
- **User manuals** - Consulting user and installation manuals



Scarica la nostra APP sugli store



Installation

How to install Statistics for Data Analysis
(New Installation)

FOLLOW THE INSTRUCTIONS BELOW FOR A
NEW INSTALLATION.

Skip to the next section for an upgrade.

By clicking here: [Install Statistics for Data Analysis](#)
The Statistics for Data Analysis installation package can
be download from en.statisticsfordataanalysis.com

Data Analysis V. 30



For Windows Operating Systems

What's the LaunchBox?

[Instructions to install Statistics for Data Analysis V. 30 if you don't have LaunchBox](#)

[Instructions to install Statistics for Data Analysis V. 30 if you have LaunchBox](#)

[Instructions to activate the license of Statistics for Data Analysis](#)

[Instructions to install the package Premium PScore](#)

[Instructions to install Amos V.30](#)

[Instructions to install Statistics for Data Analysis V. 30 on Macintosh and Linux](#)

What's the LaunchBox?

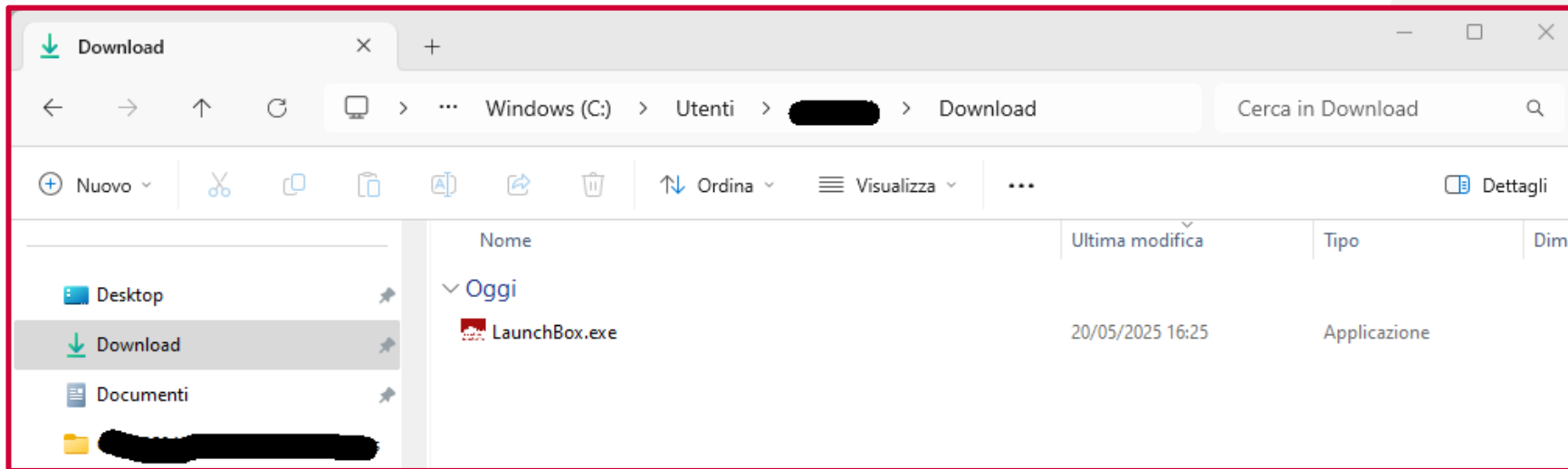
It's a tool designed to **make it easier to:**

- **download** the software Statistics for Data Analysis which includes SPSS Statistics and further Add-Ons.
- **activate** the license.
- **start** the software (after the first download)
- **automatically update the software** since each time it is started, it automatically detects new software releases, fix packs, patches, new add-ons or updates of existing ones.
- enter both **informative** (e.g. the dates of the next courses) and **in-depth** contents (e.g. user manuals).

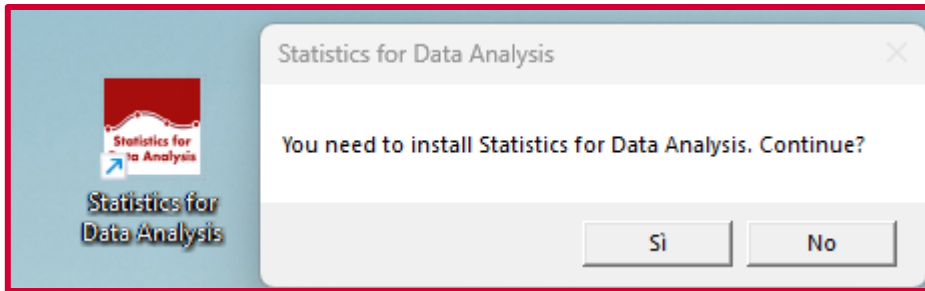
If you haven't installed it yet, you can download the **LaunchBox** from the following link:

<https://sps.smartaware.io/contents/public/launchbox/releases/LaunchBox.exe>

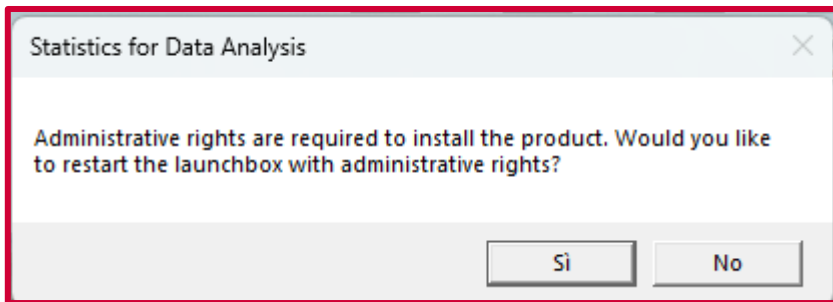
1- Navigate to the folder on your PC (usually the 'Download' folder) where the installation Setup downloaded from en.statisticsfordataanalysis.com.



2- Open LaunchBox.exe with a double click: the «Statistics for Data Analysis» icon will appear on the desktop and, simultaneously, the Statistics for Data Analysis installation will launch.

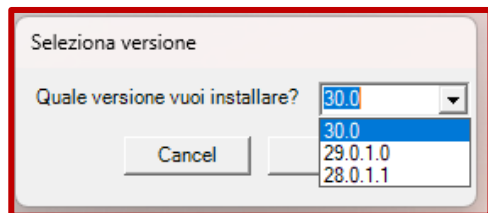


3- Then the wizard warns that administration rights are required.

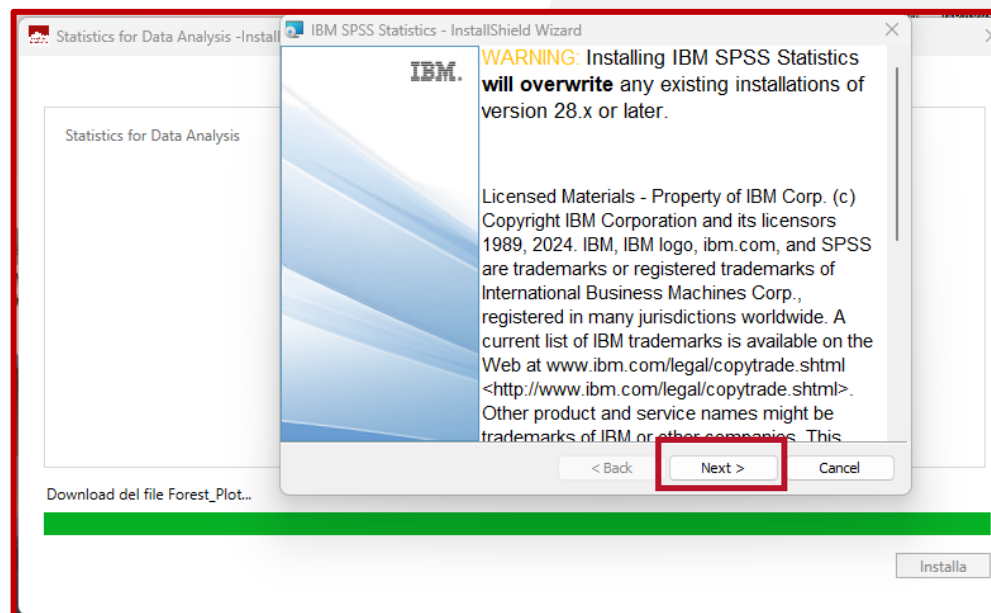
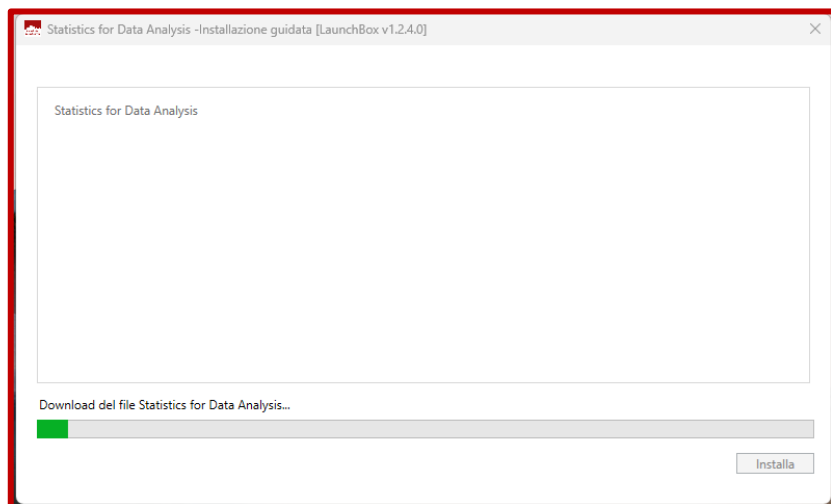


If the wizard does not appear automatically, search for «Statistics for Data Analysis» on the Desktop and open it by right-clicking >> Run as administrator

4- Select the version to install

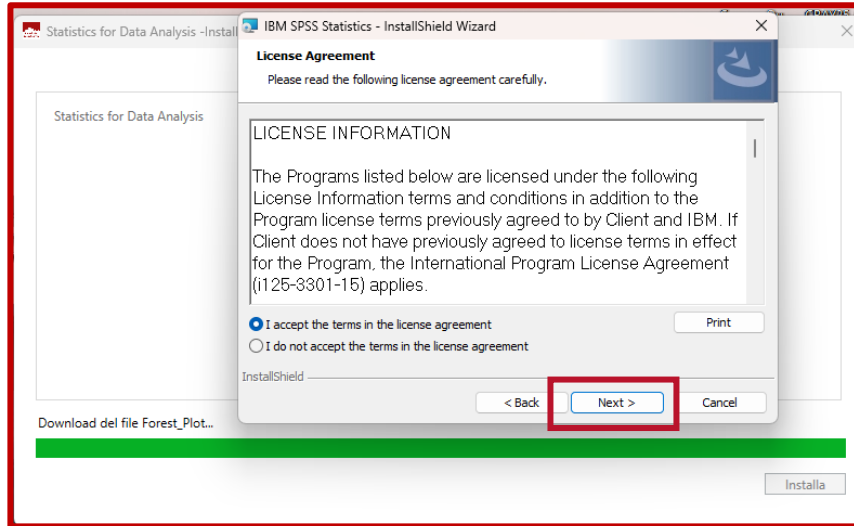


5- Follow the installation wizard

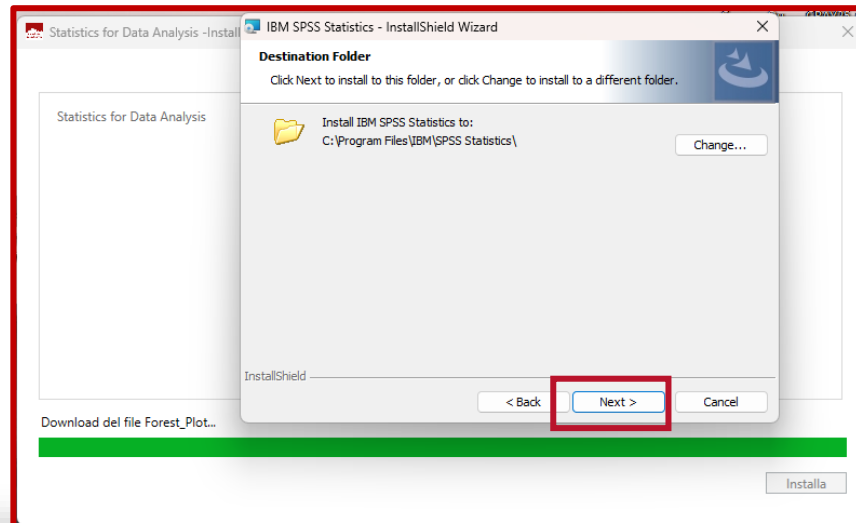


A message warns that version 30 overwrite versione 29 and/or version 28, which may have been previously installed.

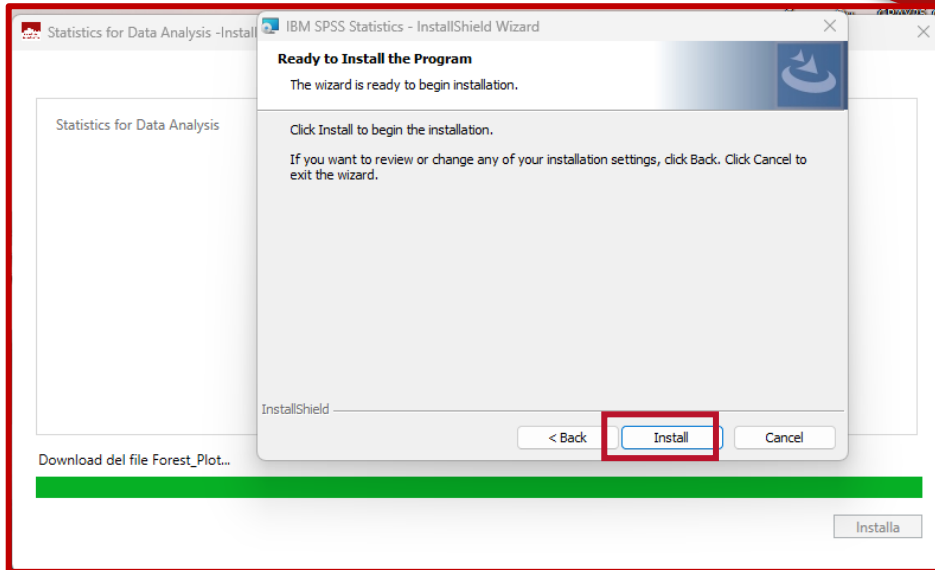
6- Continue following the installation wizard



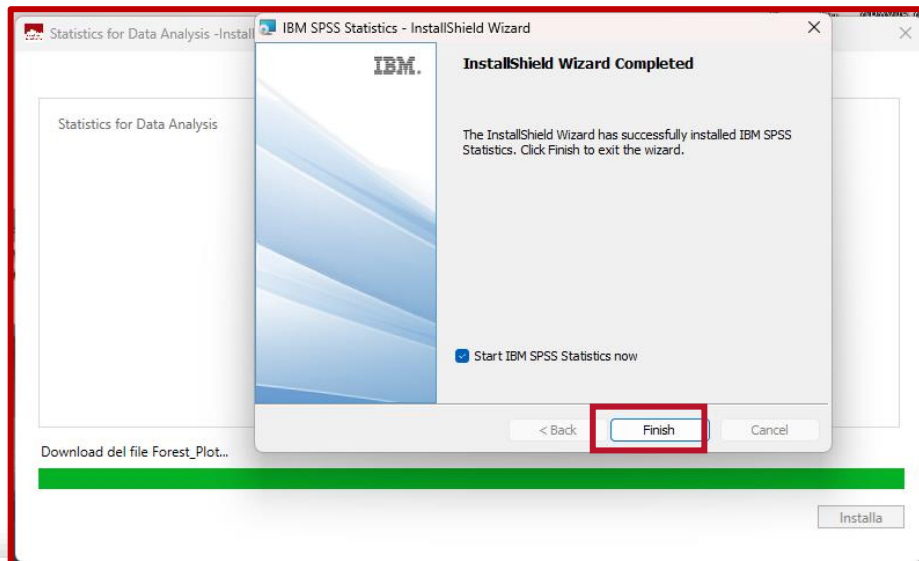
Accept the IBM License Agreement



Choose the installation folder

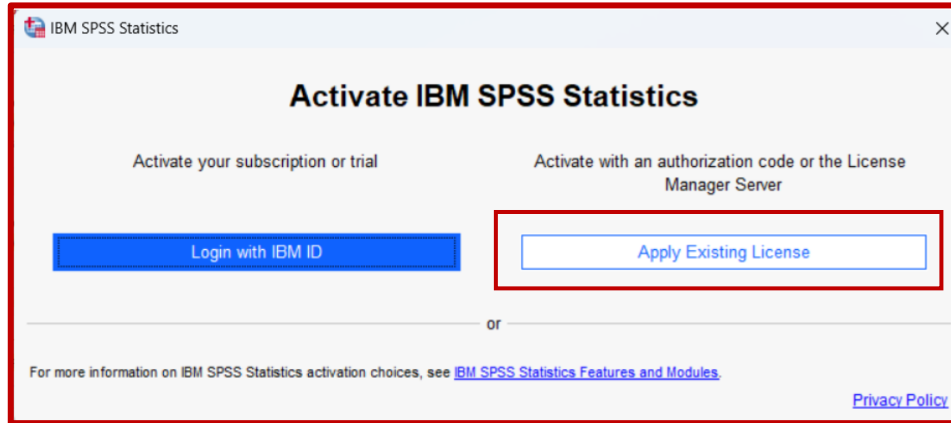


Install the software

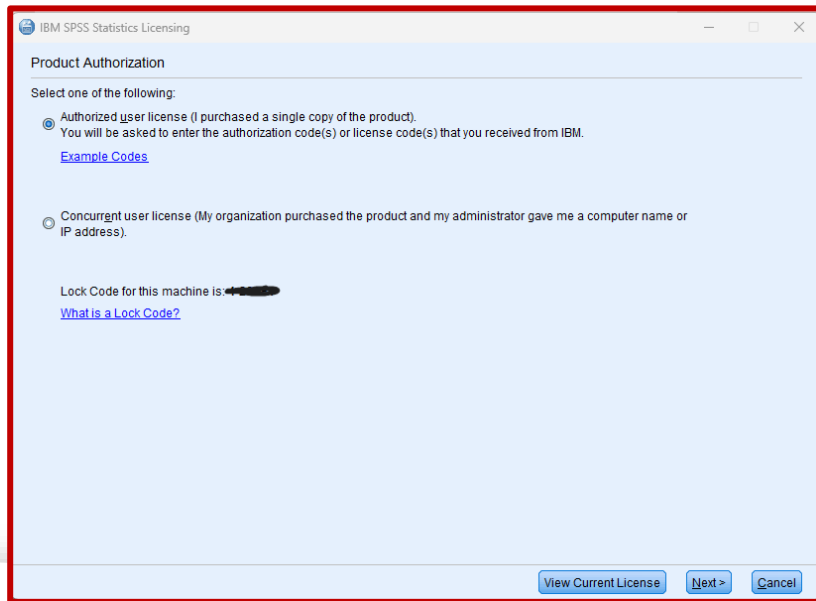


Complete the installation phase

7- Activate the license with the License Authorization Wizard



Launch the License Authorization Wizard

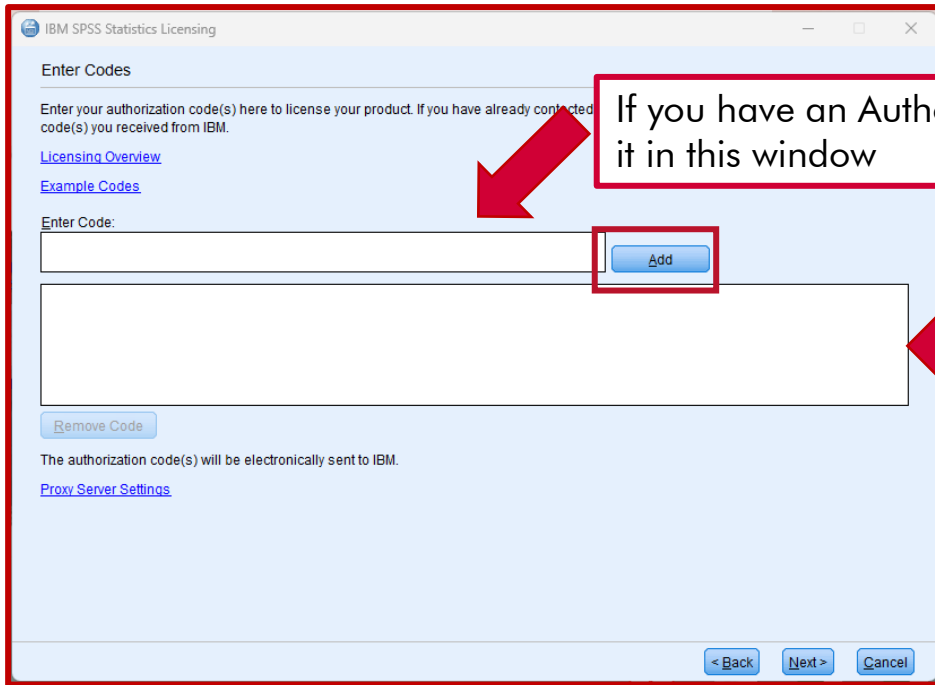


Statistics for Data Analysis license code can be:

- **Authorized user**
- **Concurrent user**

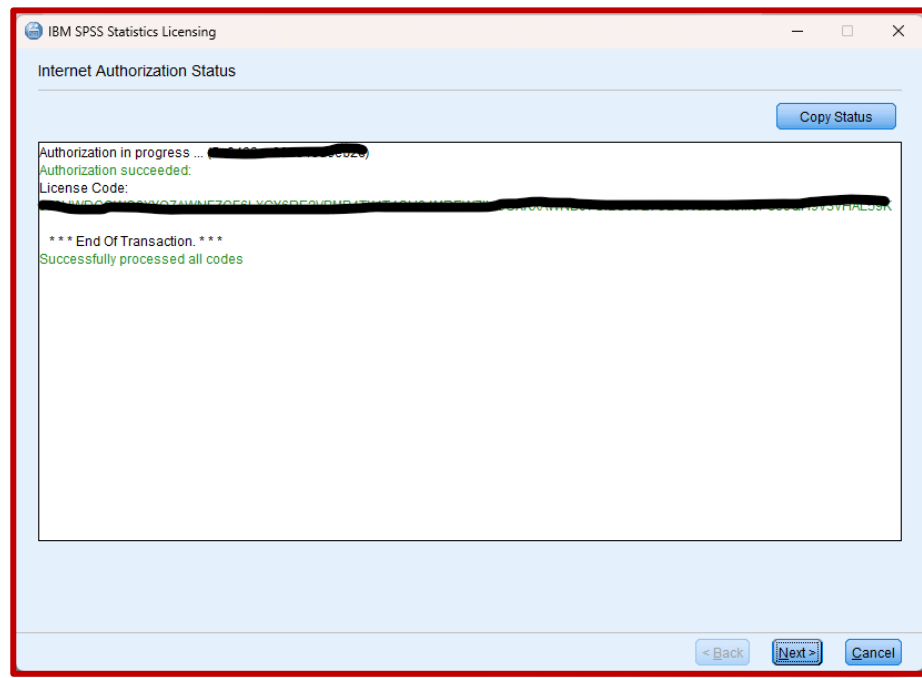
The **first option** activates a **stand alone client license**, which is activated by entering a code in the guided license procedure (picture to the side).

The **second option**, however, activates a **concurrent license**, shared with other colleagues; therefore, it is necessary to contact the IT System technicians of your company.

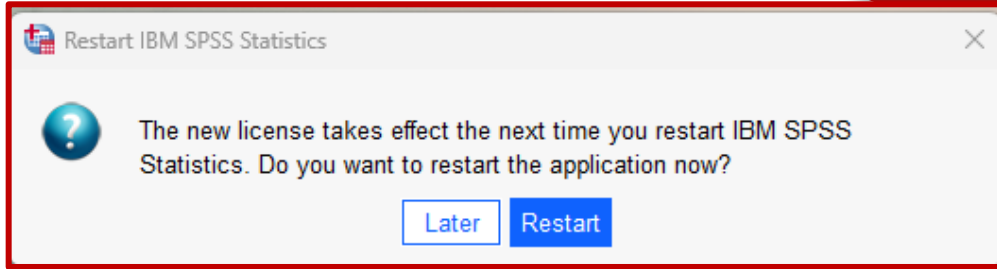


If you have an Authorized User code, enter it in this window

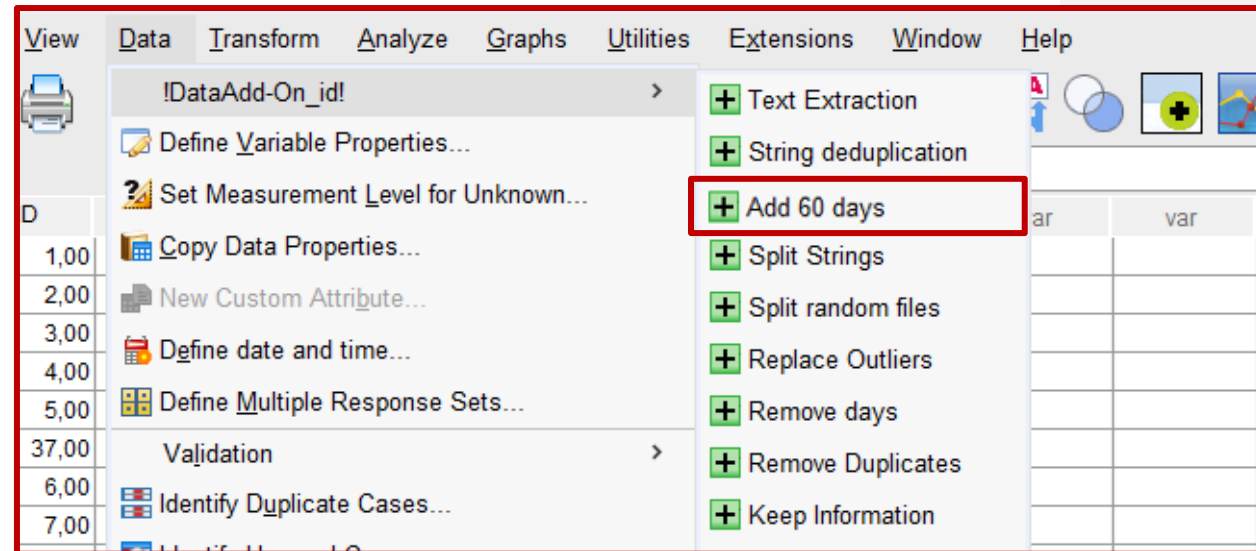
Add the code, that will appear in the window below and proceed with the installation



The wizard displays the license status: the code has been successfully entered. Proceed through the next steps until finished.



Upon the next restart of the software, you are ready to work with Statistics for Data Analysis:



Installation

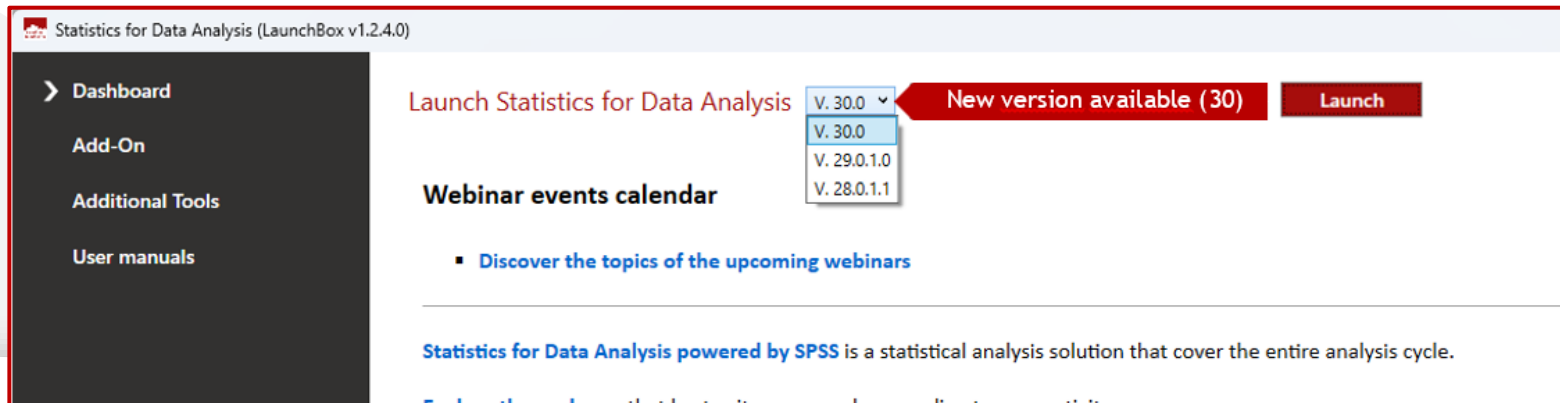
How to install Statistics for Data Analysis
(Upgrade)

FOLLOW THE INSTRUCTIONS BELOW FOR AN UPGRADE

Open with a double click the icon Statistics for Data Analysis on the desktop

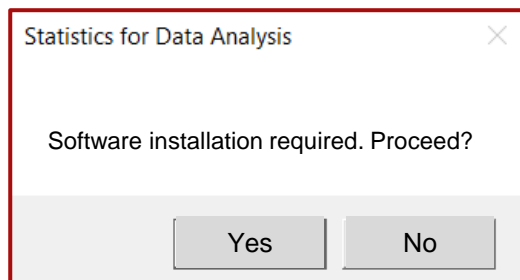


An announcement on the LanchBox Dashboard shows an alert the version 30 is now available:

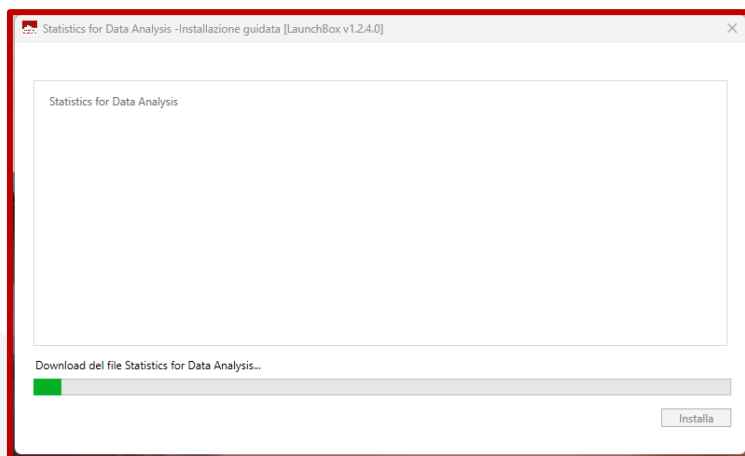


Press Launch to begin the update installation.

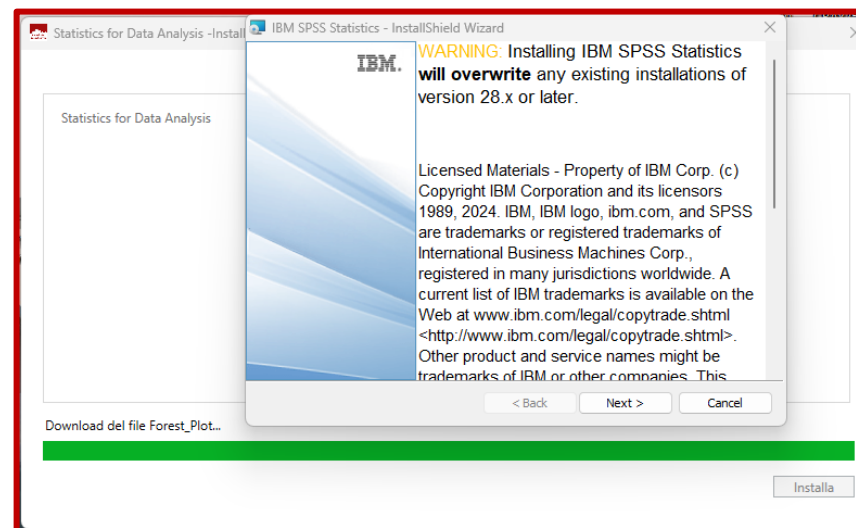
1- Install the software:



2- Follow the installation wizard for:

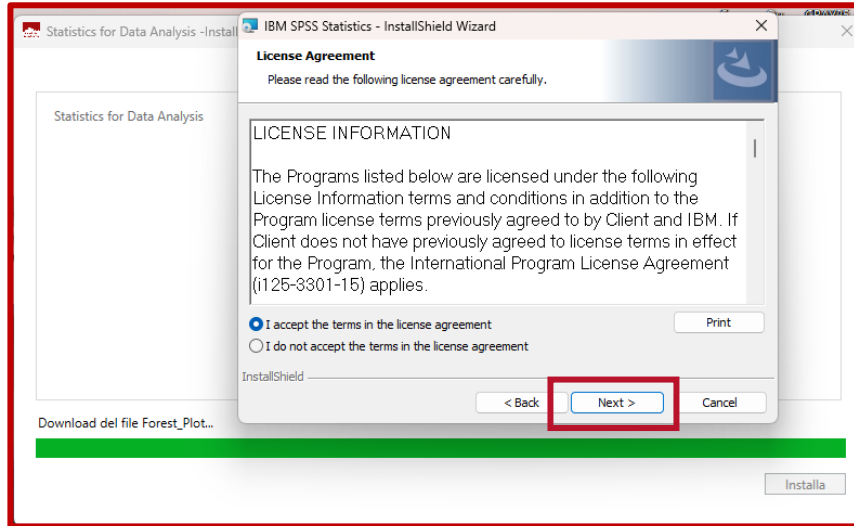


Downloading Statistics for Data Analysis

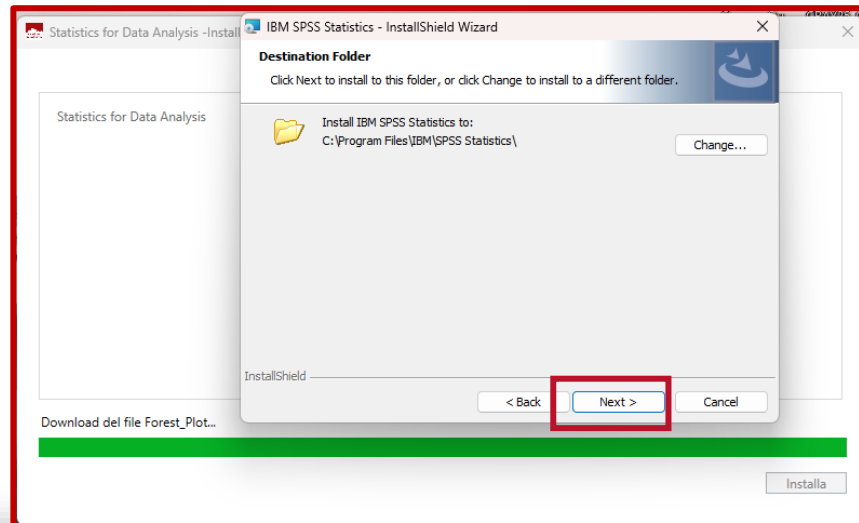


A message warns that version 30 overwrite versione 29 and/or version 28, which may have been previously installed.

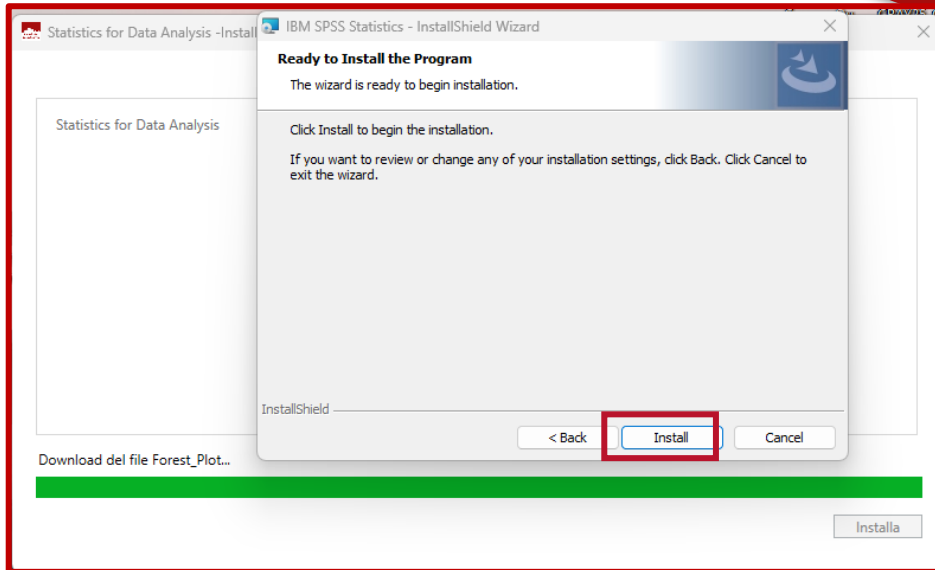
6- Continue following the installation wizard



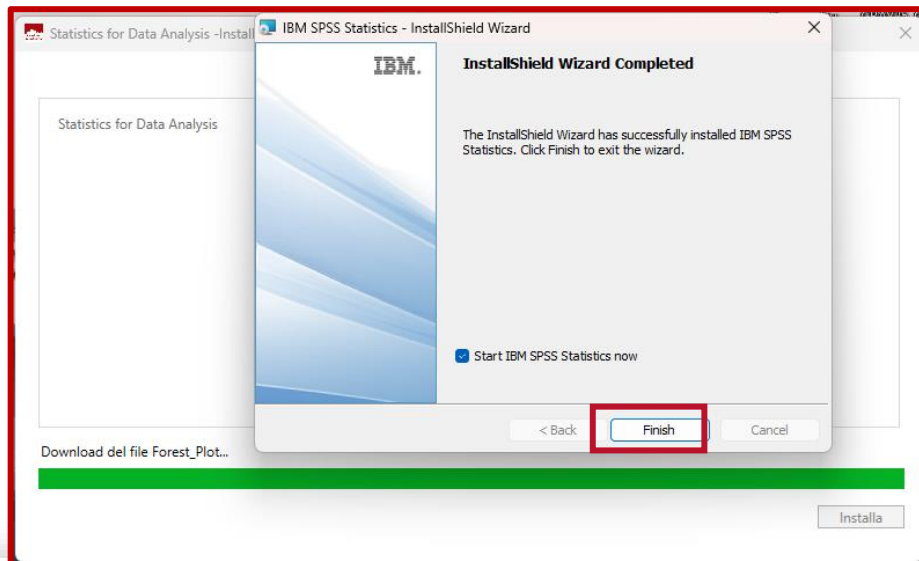
Accept the IBM License Agreement



Choose the installation folder

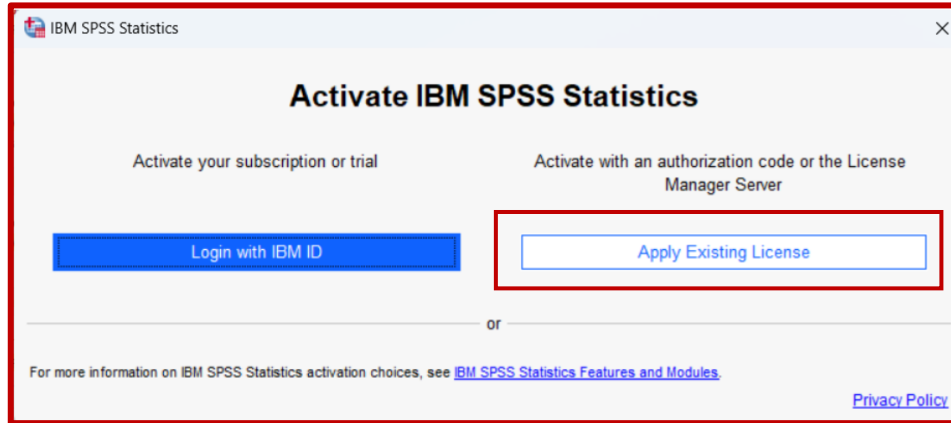


Install the software

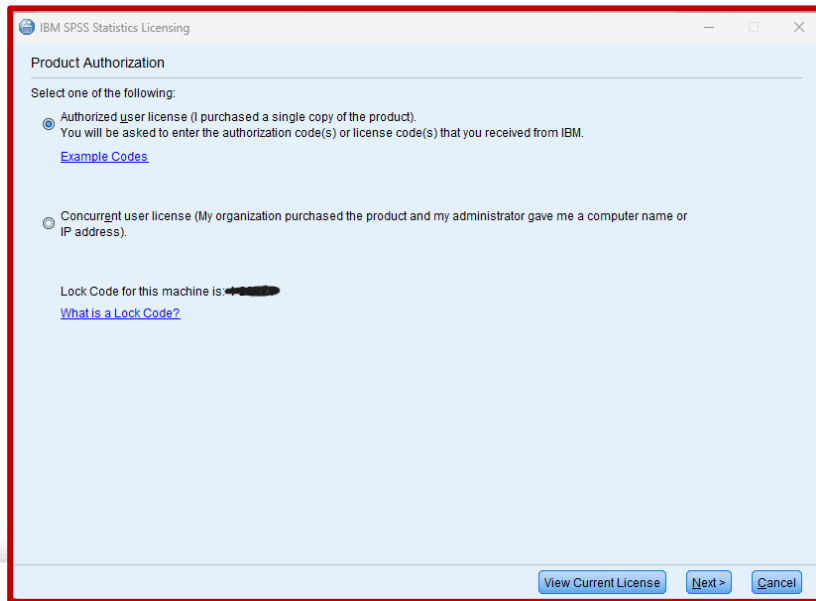


Complete the installation phase

7- Activate the license with the License Authorization Wizard



Launch the License Authorization Wizard

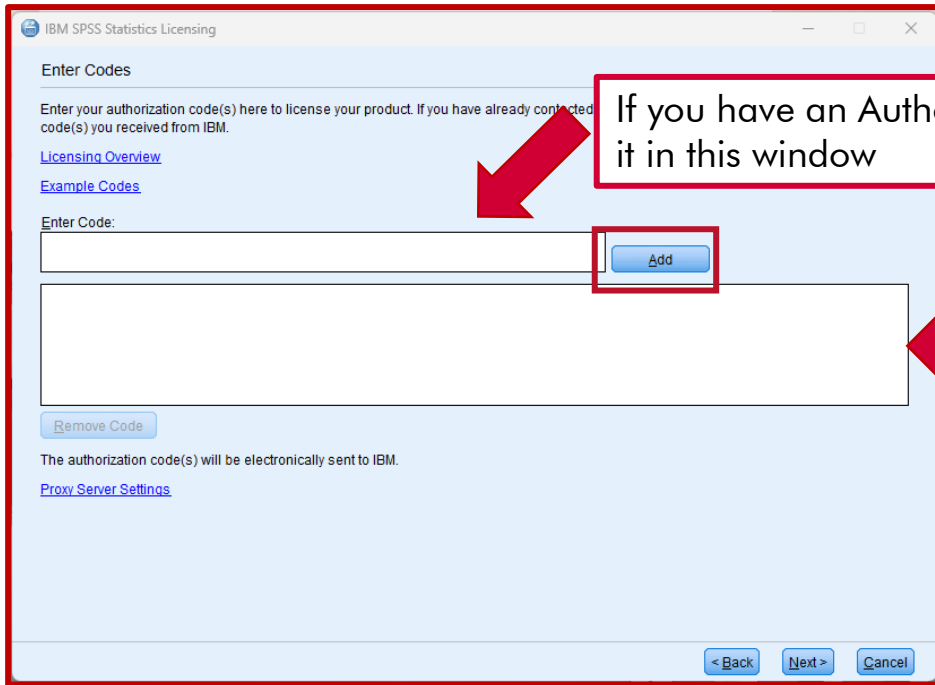


Statistics for Data Analysis license code can be:

- **Authorized user**
- **Concurrent user**

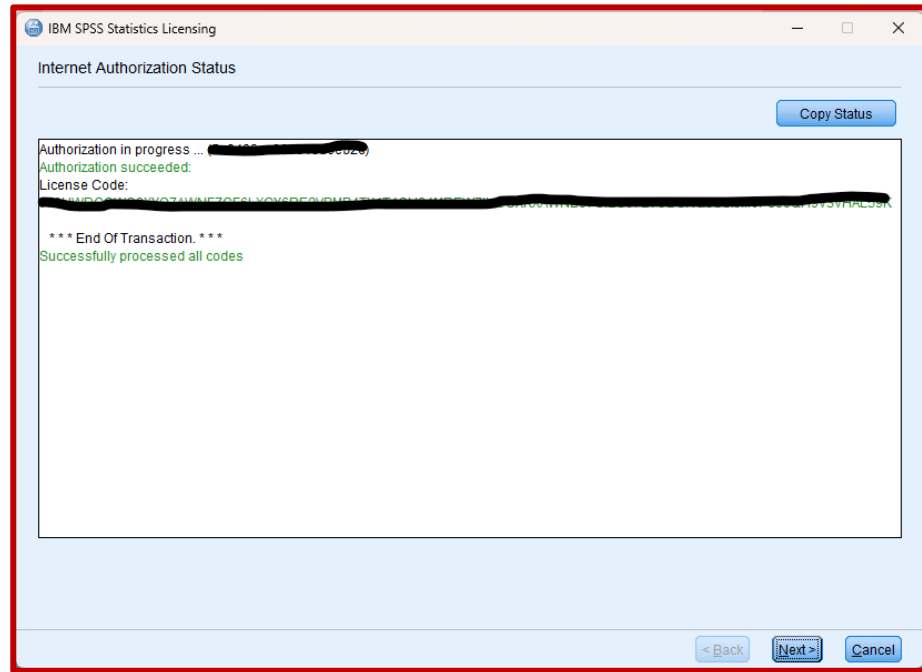
The **first option** activates a **stand alone client license**, which is activated by entering a code in the guided license procedure (picture to the side).

The **second option**, however, activates a **concurrent license**, shared with other colleagues; therefore, it is necessary to contact the IT System technicians of your company.

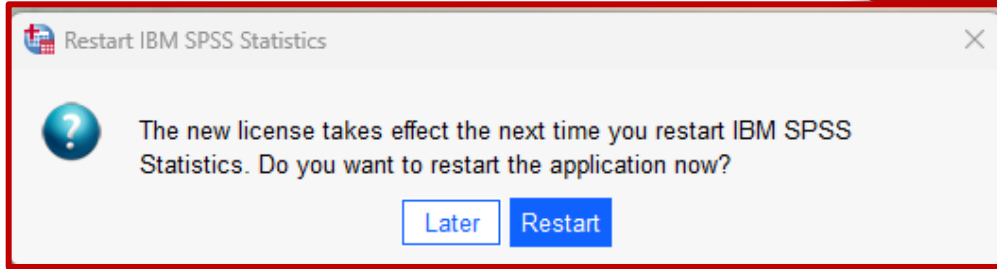


If you have an Authorized User code, enter it in this window

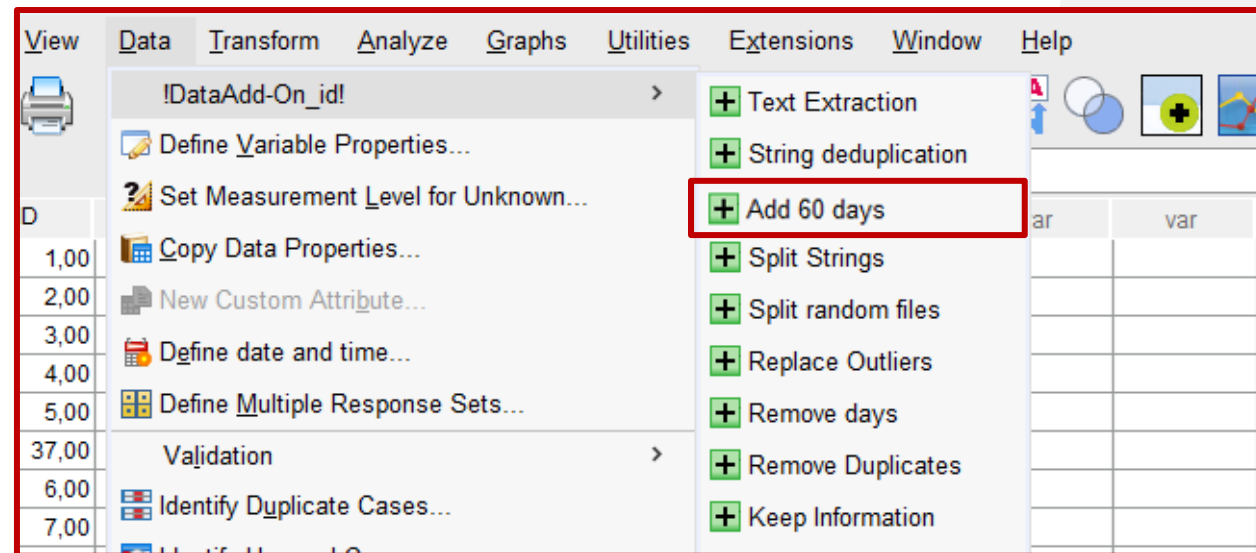
Add the code, that will appear in the window below and proceed with the installation



The wizard displays the license status: the code has been successfully entered. Proceed through the next steps until finished.



Upon the next restart of the software, you are ready to work with Statistics for Data Analysis:



Launch

How to launch Statistics for Data Analysis

Open with a double click the icon
Statistics for Data Analysis on the desktop



to open LaunchBox:



A screenshot of the Statistics for Data Analysis LaunchBox v1.2.4.0 interface. The window title is 'Statistics for Data Analysis (LaunchBox v1.2.4.0)'. On the left is a dark sidebar with navigation links: 'Dashboard', 'Add-On', 'Additional Tools', and 'User manuals'. At the bottom of the sidebar are buttons for 'Language' and 'Contact us'. The main content area has a header with 'Launch Statistics for Data Analysis v. 30.0' and a red 'Launch' button. Below this is a 'Webinar events calendar' section with a bullet point: 'Discover the topics of the upcoming webinars'. The main content area contains several paragraphs of text, each starting with a blue link: 'Statistics for Data Analysis powered by SPSS is a statistical analysis solution that cover the entire analysis cycle.', 'Explore the packages that best suits your needs, according to your activity area.', 'In continuation of the development path of the Statistics for Data Analysis solution, the SPS team extends the range of services included in, providing its customers with an entire Reserved Area where you can consult or send us methodological questions on the use of Statistics for Data Analysis.', 'Explore what is new in the latest version 30: New features, enhancements, two more Add-Ons and more.', 'Explore the Premium Module YOUDEN The new Premium Module Youden helps you determine the optimal cut-off of an ROC curve, a very useful technique that shows classification performance at different probability thresholds.', 'Explore the Premium Module PScore for the Propensity Score Matching technique useful when data come from non-randomised studies, e.g. from registers or medical records', and 'Explore the On-Line Training, which are designed to maintain a relationship and discussion with the trainer.' The final paragraph states: 'In fact, these are live courses, albeit remotely, in which a theoretical part is supported by practice, allowing all participants to have moments of exchange dedicated to the topics covered in each course.' At the bottom of the main content area is a 'Contact us for a personalize course' link.

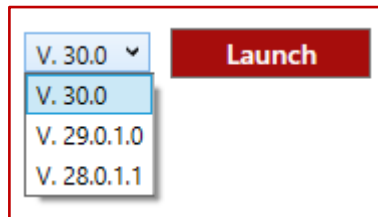
Launch Statistics for Data Analysis

V. 30.0 ▾

Launch

The «Launch» button, available on the dashboard, allows you to run Statistics for Data Analysis V. 30. Alternatively, you can choose to launch an older version.

By default, the installed software version is shown; However, this can always be changed from the drop-down menu next to the button



Upon launch, the solution checks for any new FixPacks for the selected software version and proceeds with their installation.

At the end of each new installation, the user is prompted to restart the PC.

Dashboard

Webinar and News

The application features a side menu from which you can access the area of interest.

Menu of interest areas

News

News, information and website links for more in-depth content

Statistics for Data Analysis (LaunchBox v1.2.4.0)

Dashboard
Add-On
Additional Tools
User manuals

Language
Contact us

Launch Statistics for Data Analysis V. 30.0 Launch

Webinar events calendar

- Discover the topics of the upcoming webinars

Statistics for Data Analysis powered by SPSS is a statistical analysis solution that cover the entire analysis cycle.

Explore the packages that best suits your needs, according to your activity area.

In continuation of the development path of the Statistics for Data Analysis solution, the SPS team extends the range of **services included in**, providing its customers with an entire **Reserved Area** where you can "**consult or send us methodological questions** on the use of Statistics for Data Analysis.

Explore what is new in the latest version 30: New features, enhancements, two more Add-Ons and more.

Explore the Premium Module **YOUDEN** The new Premium Module **Youden** helps you **determine the optimal cut-off of an ROC curve**, a very useful technique that shows classification performance at different probability thresholds.

Explore the Premium Module **PScore** for the **Propensity Score Matching technique** useful when data come from non-randomised studies, e.g. from registers or medical records

Explore the **On-Line Training**, which are designed to maintain a relationship and discussion with the trainer.

In fact, these are **live courses**, albeit remotely, in which a **theoretical part is supported by practice**, allowing all participants to have moments of exchange dedicated to the topics covered in each course.

Contact us for a personalize course

The Contact us button is always visible, its purpose is to provide user support at any time.

Clicking it opens the « How can we help you? » form, from en.statisticsfordataanalysis.com

Statistics for Data Analysis (LaunchBox v1.2.4.0)

Dashboard
Add-On
Additional Tools
User manuals

Launch Statistics
Webinar events
Discover t
Statistics for Data
Explore the pack
In continuation of an entire Reserv
Explore what is
Explore the Pre classification per
Explore the Pre records
Explore the On-
In fact, these are the topics cover
Contact us for a

Language
Contact us

How can we help you?

For technical questions about our solutions or to get support, visit our [Service Program page](#)

If you are interested in SPSS solutions or training and want to receive more detailed information you can:

- Fill out the form on this page by entering your data and specify your request in the text field "How can we help you?"
- Write to: customercare@spss.it

Name* Surname*

Email* Telephone number

Indicate the company name you belong to: name of the University, name of the public or private healthcare company, name of the private company, etc. *

Business Name* Position

How can we help you?
Enter your request or the reason you would like to be contacted here

For which courses would you like information:

- INTRO
- TEST
- MULTI
- REG
- SURV
- LOG-COX
- PSCORE
- HEALTH PACK
- S&E PACK
- ENVIRONMENT PACK
- TOURISM PACK

I have read the [policy/privacy](#).*

Fields marked with * are mandatory.

I would like to receive occasional email communications from SPSS

Yes
 No

I consent to the communication of personal data to third-party companies that are partners of SPSS.

Yes
 No

I am aware that I can revoke my consent at any time by writing to info@spss.it and inserting UNSUBSCRIBE into the object.

Submit request

Add-On

List of available Add-Ons

In the Add-On section, through Statistics for Data Analysis, the user can view available Add-Ons and install new ones.

Statistics for Data Analysis (LaunchBox v1.2.4.0)

Dashboard
 > Add-On
 Additional Tools
 User manuals

Select version
 Statistics for Data Analysis V. 30.0

New Add-Ons

Premium PScore
 Premium Youden
 Simple Stratified Sampling
 Forest Plot

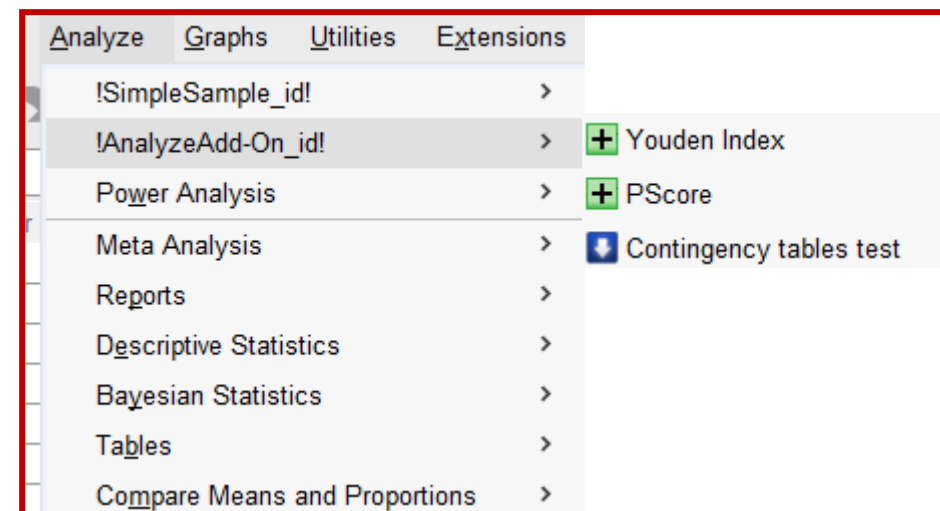
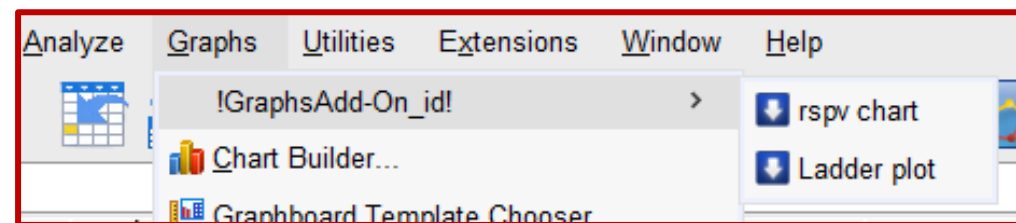
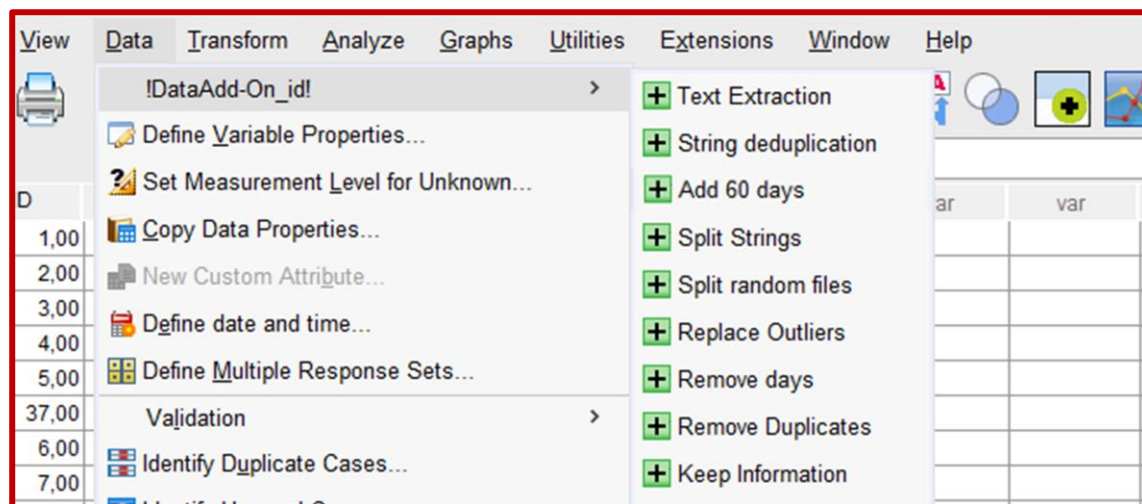
Description
 Simple Stratified Sampling is an additional feature, which is activated in the Graphs menu, dedicated to the Simple Stratified Sampling, useful for dividing the population into homogeneous subgroups (strata) and selecting proportional samples to ensure accurate representation

Install

Installed Add-Ons

DuplicateCases RemoveDays SplitStrings AddDays

The software menus provide access to installed Add-Ons:



In the Add-On section you can also see the license conditions:

Statistics for Data Analysis License Conditions

License Conditions

GENERAL CONDITIONS SOLUTION
Statistics for Data Analysis

Terms and conditions shall be deemed to be fully known and accepted upon opening the box containing the storage media or upon installing, copying or using in any manner the Application Solution or any part thereof.

1. DEFINITIONS
The following terms are given the following meaning:
"Application Solution": the licensed software product(s) and services provided by SPS to the Customer in accordance with these general license terms and conditions. The list of software products comprising the Application Solution and the services included therein are specified in the Customer's purchase order or in the SPS Licence Certificate/Service Program certificate provided by SPS from time to time.
"Purchase Order" means a unilateral communication from the Customer to SPS specifying the components of the application

The button «License Conditions» links to en.statisticsfordataanalysis.com/terms-and-conditions for complete details about general conditions.

Additional Tools

Amos, Additional packages, License activation



In the Additional Tools section, through Statistics for Data Analysis, the user can:

- Install the SPSS AMOS products
- Install additional packages (Data Access Pack, License Manager)
- Activate the license via the License wizard


In this section, based on the selected version, the user can choose to install:

- SPSS Amos software

Select version

Statistics for Data Analysis V. 30.0 ▾

Amos



Statistics Amos
V.30

Description

Statistics Amos implements the general approach to data analysis known as structural equation modeling (SEM), also known as covariance analysis or random modeling. Specifically: - Provides Structural Equation Modeling (SEM) procedures that are easy to use thanks to the ability to use a graphical interface. - Allows you to compare, confirm, and refine models.- Uses Bayesian analysis to improve model parameter estimates.- Offers several data attribution methods to create different datasets.

Install

- Additional packages

Additional packages




Data Access Pack License Manager

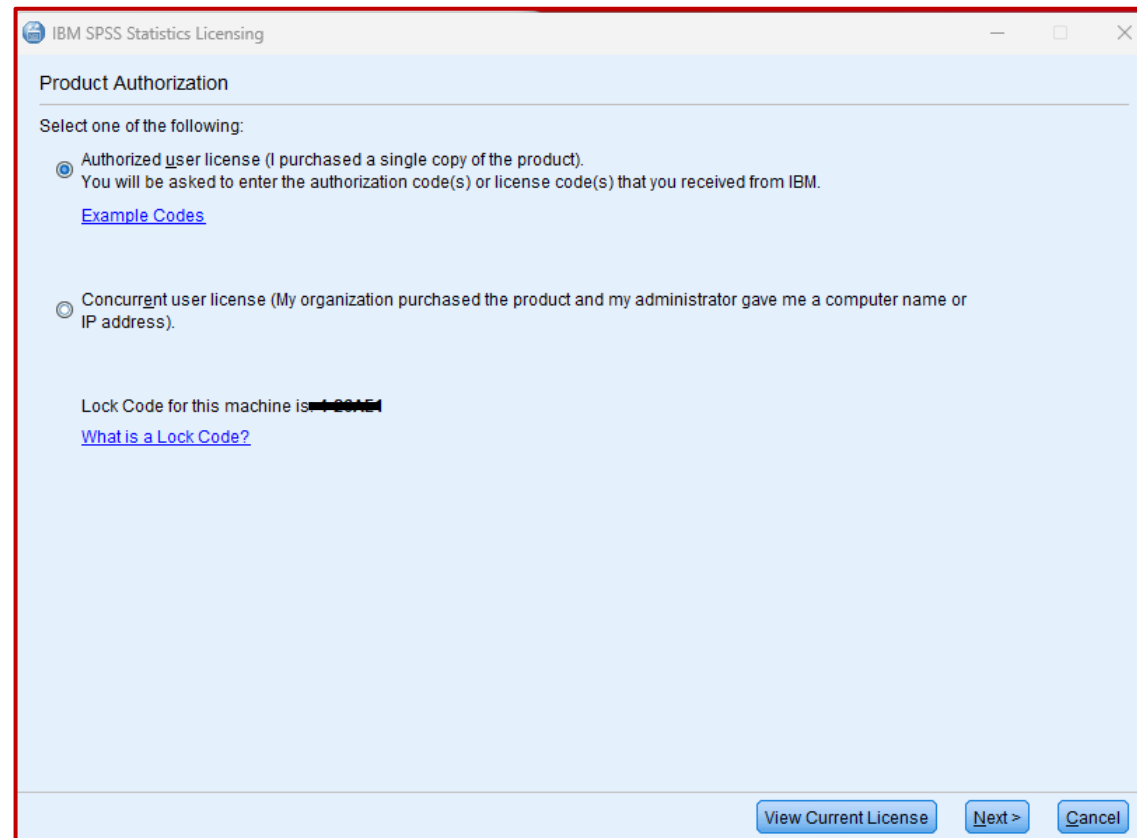
Description

Data Access Pack contains a comprehensive set of individual database-specific drivers that use ODBC to provide reliable connectivity to all major data stores, from relational databases to flat-file data. The administrator or end user can install the appropriate Connect ODBC drivers. The drivers must be installed on the computer that is accessing the data.

Install

The user can also:

- Activate the license via the License Authorization Wizard
- Locate their machine's Lock Code, which is useful during activation



User Manuals

Consulting user and installation manuals





In the User Manual section, the user can consult:

- Installation manuals
- User manuals for each product offered in Statistics for Data Analysis

















All manuals are available in this section. By clicking on each link, the material can be viewed by the user at any time.

Select version

Statistics for Data Analysis V. 30.0 ▾

-  [English user manuals](#)
-  [Italian user manuals](#)
-  [Installation manuals](#)
-  [Statistics Amos manuals](#)

Nome ^

-  Accessibility.pdf
-  Authorized_User_License_Administrator_Guide.pdf
-  Authorized_User_License_Installation_Instructions_Windows.pdf
-  Concurrent_License_Administrator_Guide.pdf
-  Concurrent_License_User_Installation_Instructions_Windows.pdf
-  Getting_Started_with_Installation_and_Licensing.pdf
-  IBM_SPSS_Advanced_Statistics.pdf
-  IBM_SPSS_Bootstrapping.pdf
-  IBM_SPSS_Categories.pdf
-  IBM_SPSS_Complex_Samples.pdf
-  IBM_SPSS_Conjoint.pdf
-  IBM_SPSS_Custom_Tables.pdf
-  IBM_SPSS_Data_Access_Pack_Installation_Instructions_UNIX.pdf
-  IBM_SPSS_Data_Access_Pack_Installation_Instructions_Windows.pdf
-  IBM_SPSS_Data_Preparation.pdf
-  IBM SPSS Decision Trees.pdf



Our Contacts



training@spss.it

Write us for information on training



info@spss.it

Contact us to get all information you need to choose the solution best suited to your needs